

4-DIMENSIONAL PIPELINE SEDIMENT ASSESSMENT

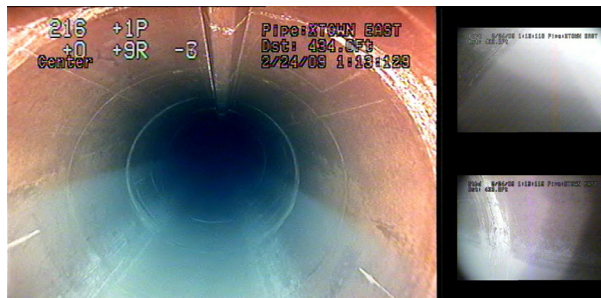
At SeaView Systems, our philosophy is to allow the end user to quickly view the big picture and then easily "mine" their way into specific details where necessary.

Pipeline Inspections:

- Penetrations
>10,000ft/3050m
- Profiling sonar model of pipeline interior
- Scanning imaging sonar of internal walls
- Geo-referencing/
X,Y,Z Modeling

Reports:

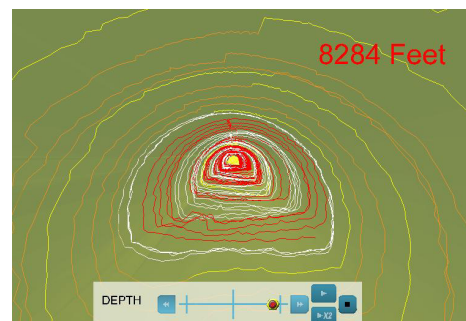
- Sediment charts
- Volume charts
- 3D Pipewalk
- Out-of-round
- 3-channel synchro-
nized video
- VisualSoft video and
sonar data collection



to mark and retrieve specific features later on. An overview of the sediment depth and volume can quickly be gained with the charts we supply, which can show the entire pipeline, or specific sections as required.

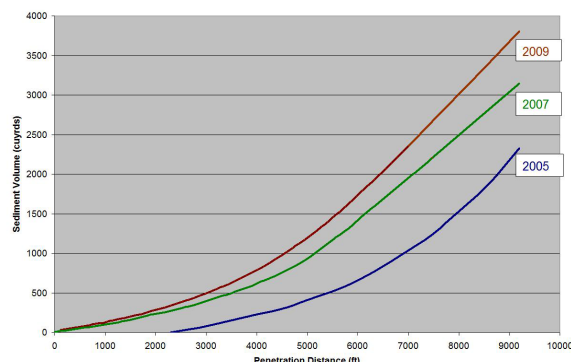
3-Dimensional

The data collected from the profiling sonar attached to the ROV enables us to build a 3-dimensional view of the conduit which can be viewed using SeaView Systems' 3-D Pipewalk Viewer. The VisualWorks software suite synchronizes all video channels, the sonar image, 3D tunnel image and the logged events and presents them into a single viewer which can be accessed almost immediately via an internet connection.



4-Dimensional

When investigations are carried out at regular intervals a picture of the change in the condition of the conduit can be built. You can prepare a maintenance plan for future remediation work and when the time comes, you can prepare tender documents specifying the exact volume of material that needs to be removed.



Aggregate Sediment Volume Vs Penetration Distance

SeaView Systems 4-dimensional inspections can gather and present valuable empirical data that enables you to make accurate budgeting, planning and maintenance decisions.