

### INSHORE SERVICES

#### Long Distance Pipeline Inspections:

- Penetrations >10,000ft/3050m
- Profiling sonar model of pipeline interior
- Scanning imaging sonar of internal walls
- Geo-referencing/X,Y,Z Modeling

#### Reports:

- Sediment charts
- Volume charts
- 3D Pipewalk
- Out-of-round
- 3-channel synchronized video
- VisualSoft video and sonar data collection
- Bathymetric charts
- 3D wireframe
- Sonar mosaic
- Combined 3D wireframe with draped sonar mosaic

#### Science Support:

- Transects
- Sample collection
- High resolution Stills
- HD video

#### Mine Remediation:

- Light intervention
- Leak detection

#### Hydrographic/Bridge and Dam Survey:

- High accuracy sonar modeling
- Multibeam sonar survey
- Singlebeam sonar survey
- Sidescan sonar survey
- Imaging sonar survey
- Subbottom sonar survey
- Magnetometer survey
- Pipe/Cable survey

#### Engineering Consultancy:

- ROV integration
- Tooling development
- Systems development

#### Salvage:

- Magnetometer
- Underwater cutting
- Debris field survey

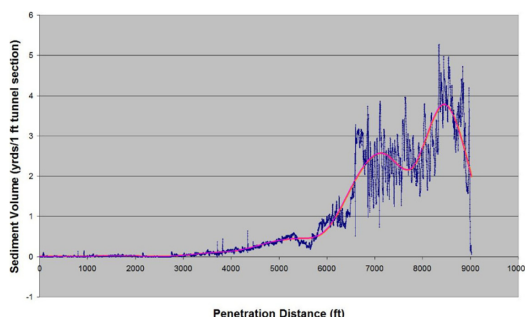
9890 Huron Creek Drive  
Dexter, MI, 48130  
734-426-8978  
info@seaviewsystems.com  
www.seaviewsystems.com

Since 1998 SeaView Systems has offered a wide range of underwater intervention and survey services to water utilities, hydroelectric power generators, mines, dam operators, science research and others interested in the care and use of water resources. From difficult mine remediation projects to 10,000ft pipeline inspections to 3D modeling and inertial navigation system positioning, SeaView Systems is a leader in developing long distance tunnel inspection technology and innovative solutions to the most difficult problems.

#### Knowledge is strength

The value we provide managers of water transmission assets is the information about the general condition of their pipelines. Armed with this knowledge, our clients can prepare long-term budgets and plan for work that focuses on the areas requiring attention before the condition necessitates expensive emergency

intervention. Using the information we supply, our clients can prepare accurate specifications for remediation work then put the work out to tender, resulting in competitive pricing. An investment in SeaView Systems services will result in substantial cost savings for the informed and well planned remediation project.

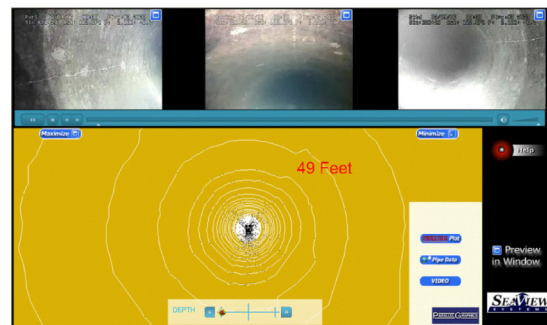


**Sediment Volume Chart**

We have the capacity to inspect flooded lines down to 10" ID and penetration distances of up to 10,000ft. Our equipment runs on fiber optic umbilical cable providing three channels of high quality video. In addition to video we carry a range of sonars and other sensors that enable us to measure the depth and volume of sediment, volume of trapped gas or out-of-round of a pipe. Using Inertial Navigation System technology we are able to generate geo-referenced 3 dimensional x,y,z models of pipelines and tunnels.

#### Light intervention

We are proud of our reputation for achieving results in challenging underwater intervention operations. Whether your project requires diver support, repairs, mine remediation, salvage or other underwater intervention tasks, SeaView Systems' team has the experience to offer world class solutions.



**3D Pipewalk Viewer**