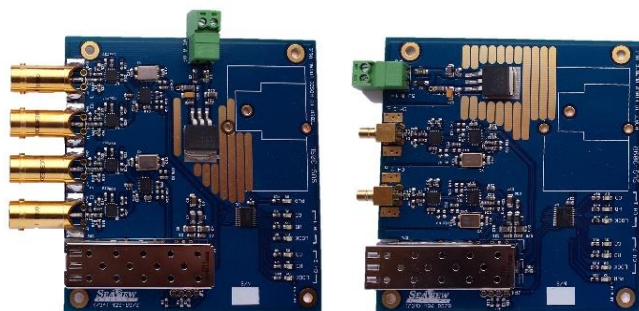


## SVS-309 HD-SDI Video to Fiber Converter

SeaView Systems' dual channel HD-SDI data converter provides the ability to convert HD-SDI data and lower definition format video, such as typically generated by HD cameras in underwater applications, and transmit those data to surface on fiber where it is converted back to HD-SDI for viewing and recording. It does this in a very compact PC-104 package which may be run in a stand-alone mode or may be stacked and run in conjunction with SeaView's Optical Multiplexer and/or Gbit Ethernet converter.

No data compression is performed in the conversion of HD-SD so no artifacts are introduced during conversion.

The surface card is provided with two output connectors per channel in order to provide users with signal to both a viewing monitor and a digital video recorder.



The HD-SDI converter may be stacked neatly on top of SeaView's other optical data cards; the fiber multiplexer and the Gbit Ethernet card. All data may be combined onto a single fiber via a compact wave division multiplexer (CWDM).

Video Formats:	1080p (3G-SDI, 2.97Gbit/s and 2.970/1.001 Gbit/s)
	720p,1080i (HD-SDI 1.485 Gbit/s and 1.485/1001 Gbit/s)
	480i and 576i (SD-SDI, 270, 360, 143 and 177 Mbit/s)
Indicator LEDs:	Power
	PLL lock, lock to SDI data stream established
	HD signal detected
	CD: SDI signal detected on remote. Optical link established on local.
Optical Connector:	SFP modules as required. May be bi-directional for stand-alone use or CWDM frequencies if stacked with other cards.
Electrical Connectors:	Either Phoenix Contact or Molex connectors specified at time of order.
Power Requirement:	900 mA@5VDC
Dimensions:	90mm x 96mm x 17.5mm

SeaView Systems, Inc. sells and operates remotely operated vehicles, marine electronics and other custom hardware/software tools including oceanographic instruments, such as the industry-leading SVS-603 wave sensor, to meet oceanographic applications.